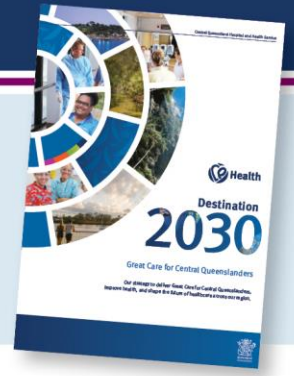


Cancer Care Coordinator

Our Destination 2030: Great Care for Central Queenslanders strategy will shape the future of healthcare across our region and support our aim for Central Queenslanders to be amongst the healthiest in the world. Great staff working in great teams with a culture of supporting and investing in our people's future. Find out more visit online

www.health.qld.gov.au/cq/destination-2030

Great People, Great Place to Work



Role Details

Role Title	McGrath Cancer Care Coordinator-Multi-stream	Classification	NRG7
Status	Temporary Full Time 18 months Commencing 1 st August 2025	Salary	\$ [Recruitment to populate] –
Unit/Facility	Cancer Care Services – Ambulatory Care	Total Package	Up to \$ [Recruitment to populate] –
Location	Rockhampton Campus	Contact	Kim Burke 0436848320
Job Ad Reference	[Recruitment to populate] RK1K (Location, year, month)	Closing Date	3 weeks advertising please

*Please note: there may be a requirement to support patients at other facilities located across Central Queensland Hospital and Health Service

Central Queensland Hospital and Health Service

CQ Health provides public health services across Central Queensland, in hospitals and in the community. CQ Health is a statutory body governed by our Board. We serve a growing population of approximately 250,000 people and employ more than 3,700 staff, treating more than 700,000 patients each year. The health service has a diverse geographic footprint, ranging from regional cities to remote townships in the west and beachside communities along the coast.

Cancer Care Services – Ambulatory Services

Cancer Care Services provides care for patients with cancer from all divisions and geographies across the Central Queensland Hospital and Health Service, and at times extends to patients living in Central West Queensland. Day Therapy and Outpatient Ambulatory services are provided during business hours, Monday to Friday (including public holidays). Systemic anti-cancer treatments and supportive therapies are the core business of the service.

The Service Capability is assessed against the Queensland Department of Health Clinical Services Capability Framework for Public and Licensed Private Health Facilities and is documented in the CQHHS Service Agreement.

A hub and spoke model is in place for Cancer Care Services across CQHHS. The model of care is based on best practice models that closely integrate Cancer Care Services with Specialist Palliative Care Services.

CQ Health
Living our values

Care	We are attentive to individual needs and circumstance	Integrity	We are consistently true, act diligently and lead by example
Respect	We will behave with courtesy, dignity and fairness in all we do	Commitment	We will always do the best we can all of the time



Cancer Care Services serve as a primary centre for the administration of cancer related cares through a model that respects the dignity of the patient and the family through the provision of compassionate care utilising:

- Direct access
- Provision of a multidisciplinary team
- Maintenance of a person-orientated environment
- Support for the patient's family and carers
- Symptom prevention and management
- Outreach services to selected areas.

The model of care for Cancer Care Service integrates through the following service areas:

- Inpatient care (provided by Cancer Inpatient Unit)
- Ambulatory care (Day Therapy Unit)
- Tele oncology services with hubs in Emerald and Biloela Hospitals and Theodore MPHS
- Specialist clinics – Medical Oncology, Radiation Oncology, Haematology, Specialist Palliative Care (with access to telehealth to allow care closer to home)
- Cancer Care Coordination Service - Cancer Care Coordinator, Prostate Cancer Specialist Nurse and Specialist Breast Care Nurses
- Satellite Cancer Care Pharmacy
- Regional Cancer Care Allied Health services
- MDT coordination – Surgical, Lung and Colorectal MDTs
- Inclusion in Brisbane MDT meeting for speciality referral.
- Radiation Oncology (provided by Genesis Care).

The Opportunity

In accordance with the Values of CQHHS, the McGrath Cancer Care Nurse (MCCN) supports achieving the goals and objectives of the role and organisation.

The MCCN provides care, information, and support for people with cancer across the continuity of care pathways and multidisciplinary teams across the cancer care community within the Health Service/demographic region. The MCCN will provide collaborative clinical and supportive care for people and their families, along with the facilitation of communication across the multidisciplinary cancer care team.

The McGrath Cancer Care Nurse will have expert knowledge regarding the spectrum of cancer care, inclusive of health assessment, treatment pathways, referrals, and on-going facilitation of clinical and supportive cancer care by

- Providing specialist knowledge to staff and those affected by cancer.
- Being a point of contact for patients and health professionals to facilitate timely access to appropriate education and information resources that encompass all aspects of treatment and care.
- Covering care for all patients and families with a diagnosis of cancer outside the streams of prostate and breast cancers.
- Participate in the development of referral pathways and review processes to facilitate the timely and smooth transition of care between health professionals and health facilities.
- Being a patient advocate and ensure patients are offered appropriate treatment options including access to trials and improved access to services through participating in multidisciplinary team meetings.
- Providing a link between Rockhampton Hospital nursing staff and national and international organisations/forums.

Total Package

- Up to 12.75% employer superannuation contribution
 - Annual leave loading 17.5%
 - Salary packaging
 - Work/life balance, variety, and flexibility
 - Employee Assistance Program
- Additional benefits to this role include:**
- Renumeration for post graduate qualification directly related to provision of care to cancer patients.

The Role

Accountabilities and responsibilities clarify the competency level and skills required to perform the duties of the role successfully. The ideal applicant will be someone who can best demonstrate their fit to both the organisation factors above and the accountabilities and responsibilities factors below:

1. Key Responsibilities, Outcomes and Activities

1.1 Leadership and Management

The role provides leadership that facilitates the ongoing development of clinical practice that reflects the McGrath Model of Care.

- Acts as a role model and an expert clinician in services to patients with cancer
- Leads, establishes, and reviews clinical guidelines in the area.
- Provides leadership in the ongoing review of current clinical practice, ensuring it is evidence based and bench marked against peers to ensure best practice.
- Assumes leadership roles, which promote broader advancement of clinical practice. For example, membership of committees, leadership of position papers and development of advanced nursing practice standards.
- Promotes adherence to the Code of Ethics for Nurses in Australia and the Code of Professional Conduct for Nurses in Australia.
- Leadership in branding and awareness of the role and building of internal and external relationships, including referral pathways to the MCCN service.

1.2 Operational Responsibilities

- The MCCN will assess the individual needs of the patient, their families and carers and co- ordinate relevant support services in hospital and/or the community including palliative care services.
- The MCCN will work in collaboration with the cancer nurses within the Health Service and greater cancer care network including telephone/telehealth cancer support services.
- The role of the MCCN requires close liaison with the oncology, radiation oncology, palliative care and allied health departments ensuring the continuity of care and services to patients with cancer
- The MCCN will actively facilitate timely communication within the Multidisciplinary team (including Primary Health care providers) relating to treatment plans, clinical and supportive care needs of the patient and their families.
- The MCCN will provide specialised and relevant education and information on their diagnosis and relevant supportive care resources.
- The MMCN will provide clinical and supportive care assessments using validated screening tools and techniques within the clinical /optimal care treatment pathways.
- The MCCN will actively participate in the multidisciplinary team and will be involved in treatment planning.
- The MCCN is funded by the McGrath Foundation. The Foundation will supply the nurse with sufficient information and material about the Foundation to enable the McGrath MBCN to promote the objectives and interests of the Foundation. The Foundation will provide the nurse with appropriate notice of any promotional activities that they may be required to attend.
- The MCCN will be available by phone or pager within business hours to answer queries and provide advice regarding the care of patients who have cancer.
- The MCCN will be required to meet operational requirements of the McGrath Foundation agreed to with CQHHS.
- Ensure specific data required by the Foundation is added to the relevant McGrath Foundation controlled database on a regular and timely basis.
- The MCCN will attend and actively participate in McGrath Foundation education and information sharing events.

1.3 Resource Management

Adherence to CQHHS professional conduct and code of ethics, standards of practice and competencies, Values and Vision.

The MCCN provides expert clinical advice to patients, carers, and other health care professionals within the service. The develops, facilitates implements and evaluates care management plans for patients with complex health needs.

- Provides an expert patient centred consultancy practice both within and across specialties, participating in direct patient care provision.
- Develops specialised education resources for patient/carer.
- Identifies and uses innovative clinical and best practice models e.g., implementation and evaluation of new treatments, technologies and therapeutic techniques relating to the specialty.
- Provide clinical assessment, treatment and management for patients using appropriate clinical pathways, to promote the most efficient service to these patients.
- Facilitates and co-ordinates patient care in consultation with the multidisciplinary team.
- Recognise the ability of the patient to benefit from the input of multidisciplinary team members and make relevant referrals.
- Participates / collaborates in the design and conduct of quality improvement initiatives.

1.4 Education

The MCCN contributes to the development and delivery of speciality related education programs.

- Participates in both formal and informal education programmes.
- Identifies clinical education needs.
- Collaborates with others in the development and delivery of education programmes.
- Develops educational resources for nurses and other health care professionals.
- Participates in the orientation of staff.

1.5 Clinical Services Planning and Management

The MCCN participates in the formal processes for the strategic and operational planning for the clinical service. The role also involves the organisation and delivery of specialist consultant service.

- Identifies future issues and new directions for cancer care services.
- Contributes to formal service and strategic planning processes within the organisation.
- Provides on-going comprehensive analysis of current practice and the impact of new directions on the clinical specialty service.

1.6 Contributes to the achievement of professional expertise for self and direct reports through:

- Maintenance of ongoing personal professional development / continuing education
- Personal application of the CQHHS management performance framework
- Identifying, encouraging, and monitoring the continuing development of others within a learning culture.

2. Safe Practice and the Environment

Contributes to ensuring a safe and hazard free environment for self and others by taking all appropriate steps to:

- **2.1** Complies with Occupational Health and Safety policies and any subsequent procedures and instructions.
- **2.2** Ensures objectives of Occupational Health and Safety policies are integrated into work practices.
- **2.3** Consults staff on workplace health and safety matters which may affect them and ensure communication of Occupational Health and Safety issues are promoted as a normal component of work.
- **2.4** Ensures all plant, equipment, substances, and work practices / systems are suitable for their intended purpose and meet safety requirements.
- **2.5** Arranges adequate training, information, instruction, and supervision so that work is conducted safely.

- **2.6** Makes all contractors and visitors aware of safety procedures.
- **2.7** Takes immediate and appropriate steps to report, investigate and rectify any risks to health and safety and report promptly relevant health and safety issues.
- **2.8** Ensures all accidents and near misses are properly reported and recorded and investigations are carried out.
- **2.9** Maintains at all times safe access to and egress from the workplace.
- **2.10** Ensures all staff attends required emergency, evacuation and Occupational Health and Safety training.
- **2.11** Is familiar with emergency and evacuation procedures and co-operate with directions from emergency or evacuation wardens and professionals.
- **2.12** Ensures that neither you, other staff, contractors, and visitors willfully place at risk the health, safety or well-being of yourself or others at the workplace.

3. **Safety and Quality**

It is the responsibility of all staff at CQHHS to ensure that they provide safe high-quality care to our patients and residents. Safe care means accepting individual and shared responsibility as well as compliance with the CQHHS policies and protocols by all staff which are constructed to support our Accreditation to the National Standards.

Mandatory Qualifications / Professional Registration / Other Requirements

- **Mandatory qualification/s:** Registration as a Registered Nurse with the Australian Health Practitioner Regulation Agency (AHPRA) and a current annual practising certificate are mandatory for this position. Certified copies of the required information must be provided to the appropriate supervisor/manager, prior to the commencement of clinical duties.
- **Non-mandatory qualifications/requirements:** Oncology Nursing Qualification/Experience or commitment to completing qualification in a relevant post graduate qualification would be considered highly desirable.
- Post graduate qualifications in the clinical area of expertise would be consider highly desirable.
- **Proof of identity documents:** Candidates must provide certified copies of requested proof of identity documents for the purposes of General Criminal History and National Police Certificate checks.
- **Criminal history clearance:** Potential applicants are advised that the *Aged Care Act 1997* requires Queensland Health employees and volunteers of aged care services (applicable areas only) to have a current National Police Certificate. Queensland Health will facilitate the applicants obtaining the above check.
- **Public Holiday Service Provision:** Cancer Care is currently a Monday to Friday service which is operational on public holidays. Nursing staff are remunerated for being available to provide care on such gazetted holidays. This position may be required to work public holidays, if the successful applicant chooses to elect for the 5 week annual leave option.
- **Licence to operate vehicle:** This position requires the incumbent to operate a class C motor vehicle and an appropriate licence endorsement to operate this vehicle is required. Proof of this endorsement must be provided prior to the commencement of duty.
- **Travel:** Travel throughout the health service may be required as part of this position.

How you will be Assessed

You will be assessed on your ability to demonstrate the best fit for the role. Within the context of the responsibilities described above under 'The Role', the ideal applicant will be someone who can demonstrate the following:

- Experience in the provision of a safe and quality focused environment by ensuring safe work practices, developing a quality improvement plan, and applying the risk management framework.
- Experience in one of the disciplines of cancer care: - Chemotherapy, Medical Oncology, Haematology, Radiation Oncology would be desirable.
- Demonstrate high level knowledge of contemporary Cancer Care nursing practice, pathways, and theory.
- Demonstrated ability in leading a nursing team in a multidisciplinary environment utilising the principles of contemporary human, material, and financial resource management.
- High level knowledge of legislation, standards, policies, and procedures relevant to contemporary nursing practice and specific to area of practice.
- Ability to use clinical information and other technology systems relevant to work area to enhance practice and decision support.
- Demonstrated high level communication and interpersonal skills with the ability to interact professionally and sensitively with all levels of staff, patients, and the general public.
- Demonstrated ability to prioritise and manage complex, competing, and challenging situations utilising high level analytical and problem-solving skills.
- Facilitating continuity of care between health professionals and across settings for care delivery.
- Participating in service improvement activities that aim to improve coordination of care and optimise outcomes for individuals and services.